

www.axgreenhouse.com

四川艾想科技有限公司
Sichuan Aixiang Agricultural Technology Co.,Ltd

地址：成都市郫都区红光镇879号九川花园16栋4楼左侧
Address:No. 879, Ganghua Road, North District, Industrial Port District, Pidu District, Chengdu

TEL: 86-28-68745748 PHONE: 86 18782297674

www.axgreenhouse.com



GREENHOUSE SOLUTION

www.axgreenhouse.com

艾想科技

Sichuan Aixiang Agricultural
Technology Co.,Ltd

1995 年成立

Established in 1995

8000 平方米占地

Factory Cover 8000 m²

25 个出口的国家地区

Exported 25 Countries

COMPANY PROFILE

公司简介

四川艾想科技有限公司民营股份制企业，专业从事现代化农业设施、园林设施、研发、生产、推广、农业技术开发应用于一体的多元化企业。

公司位于成都市现代工业港南片区，占地8000平方米，拥有固定资产1000余万元，现代化生产厂房，先进的生产检测设备。自1995年成立以来，企业稳步发展，生产规模逐步扩大，产品质量稳定，多年来公司充分发挥自身优势，积极、主动参与各类国家级农业项目的温室、网室、大棚的设计、制作、安装，并得到专家的一致认可及好评。公司产品遍布省内外，为公司的发展奠定了坚实的基础。

于此同时，我公司还致力于开拓欧美，中东，东南亚，中亚，非洲，南美洲等市场。迄今为止我公司产品已出口至美国、加拿大、阿联酋、尼泊尔、日本、马来西亚、尼日利亚、迪拜、香港、沙特等21个国家和地区。

公司自主研制、生产的现代节水灌溉系列产品，现拥有滴灌、微喷、园林景观喷头等六大系列，一百多个规格型号的产品。公司节水灌溉产品在农业、林业、城市园林绿化中得到了广泛应用。

公司拥有优秀的管理人才，先进的生产、检测设备，雄厚的技术支持使企业具备完整的质量保证体系，完善的售后服务制度及庞大的售后服务网。

Sichuan Ailiang Agricultural Technology Co., Ltd. is a private joint-stock enterprise specializing in modern agricultural facilities, garden facilities, research and development, production, promotion, and agricultural technology development.

The company is located in the southern section of Chengdu Modern Industrial Port. It covers an area of 8,000 square meters and has more than 10 million yuan in fixed assets, modern production plants and advanced production testing equipment. Since its establishment in 1995, the company has developed steadily, its production scale has been gradually expanded, and its product quality has been stable. Over the years, the company has fully utilized its own advantages and actively and actively participated in the design, production and installation of greenhouses, net rooms and greenhouses of various national agricultural projects. And received the unanimous approval and praise of experts. The company's products are spread all over the province and have laid a solid foundation for the company's development.

At the same time, our company is also committed to developing markets in Europe, America, Middle East, Southeast Asia, Central Asia, Africa, South America and so on. So far, our products have been exported to 21 countries and regions such as the United States, Canada, United Arab Emirates, Nepal, Japan, Malaysia, Nigeria, Dubai, Hong Kong and Saudi Arabia.

The company's self-developed and produced modern water-saving irrigation series products now have six series of drip irrigation, micro-spraying and garden landscape nozzles, and more than one hundred specifications and models. The company's water-saving irrigation products have been widely used in agriculture, forestry, and urban landscaping.

The company has excellent management talents, advanced production and testing equipment, and strong technical support to enable the company to have a complete quality assurance system, a perfect after-sales service system and a huge after-sales service network.

提供优质产品，完善售后服务 你的认可是我们最大的成功！

Provide high-quality products and improve after-sales service, your recognition is our greatest success!

HONORARY QUALIFICATION 荣誉资质

4+ 项国家荣誉

8+ 项认证证书

10+ 产品专利

2 项市级荣誉

4+ NATIONAL CERTIFICATE

8+ CERTIFICATION

10+ PRODUCT COPYRIGHT

2 MUNICIPAL HONORARY



PRODUCTION MACHINE 生产线



REGIONAL LAYOUT

战略布局

提供农业解决方案
我们致力于与客户建立持久的关系

Providing agricultural solutions

We are committed to building lasting relationships with our customers





Greenhouse Solution

整体解决方案

我们的优势之一是我们的整体方法。我们不仅专注于温室的设计和建造，而且还保证室内设备，制冷，供暖，灌溉，电力，完全自动化，气候控制等方面的充分协调和实施。甚至集成太阳能电池板现在已经成为我们产品系列的一部分。

One of our strengths is our holistic approach. We not only focus on the design and construction of greenhouses, but also ensure the full coordination and implementation of indoor equipment, cooling, heating, irrigation, electricity, full automation, climate control, etc. Even integrated solar panels are now part of our product range.



设计研发
R&D



生产制造
OEM

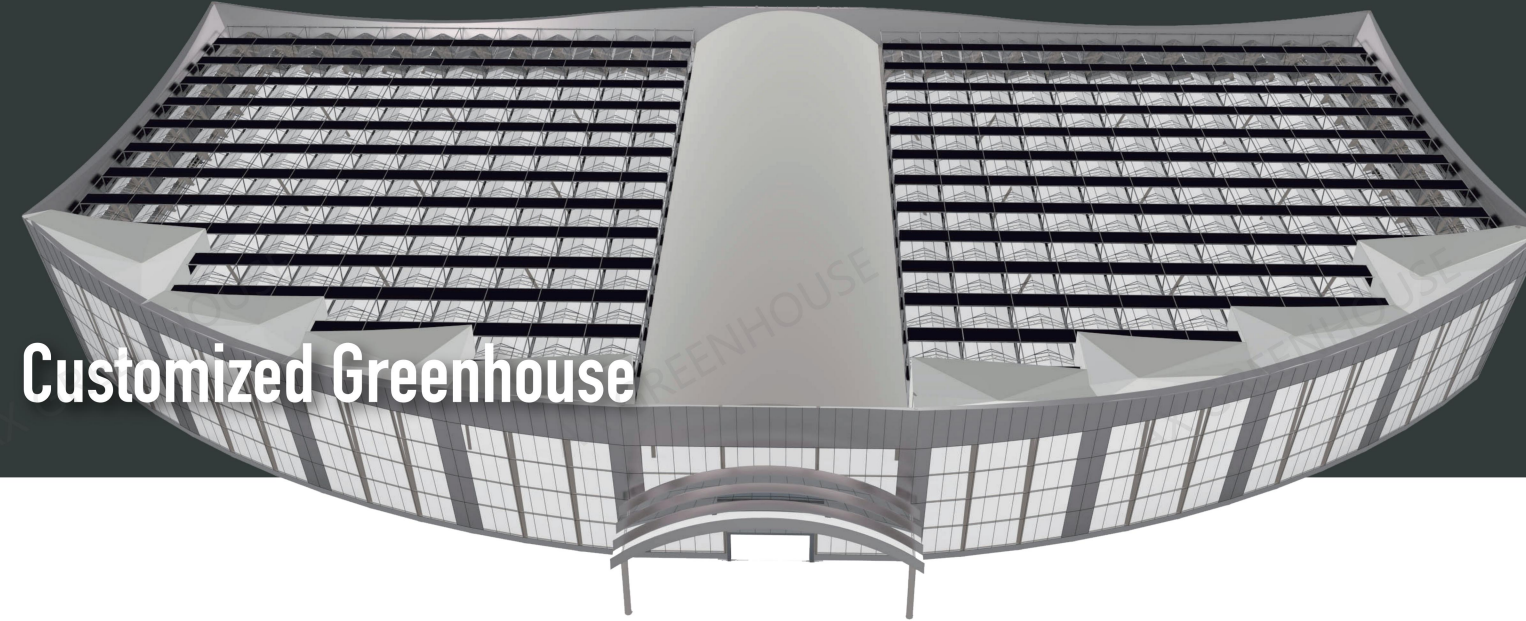


施工安装
Construction



售后服务
Service

全定制温室项目
Customized greenhouse project



Customized Greenhouse



Solar Greenhouse

光伏日光温室
Solar greenhouse project



Venlo Greenhouse

文洛温室项目
Venlo Greenhouse project



Sawtooth Greenhouse

锯齿温室项目
Sawtooth greenhouse project



哥特温室项目
Gothic greenhouse project



Light deprivation Greenhouse

遮光温室
Light deprivation greenhouse



Arch Greenhouse

圆拱温室项目
Arch greenhouse design

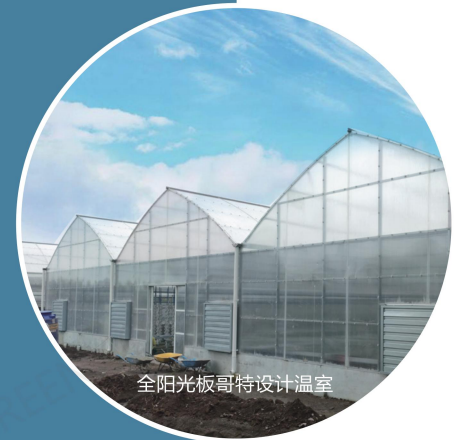


Venlo Greenhouse

文洛温室

文洛式连栋温室大棚是从荷兰引进的较先进的温室类型，外形现代，结构稳定，文洛式温室骨架，保温性能卓越，多雨槽，大跨度，网格构架结构，排水量大，抗风能力强，适用于风力和雨量较大的地区。

Wenluo type multi span greenhouse is an advanced greenhouse type introduced from Holland. It has modern appearance, stable structure, excellent heat preservation performance, multiple rain troughs, large span, grid structure, large drainage, strong wind resistance, and is suitable for areas with large wind and rainfall.



全阳光板哥特设计温室



Gothic greenhouse

哥特温室

哥特式尖拱类型的温室是一种强健的结构，经得起风吹和雪压，并且具有建筑美感。由于脊的,哥特式尖拱温室允许种植西红柿和黄瓜等作物，以及许多热带树木。

The Gothic pointed arch type of greenhouse is a robust structure, able to withstand wind and snow pressure, and has architectural beauty. Thanks to the ridges, the Gothic pointed arch greenhouse allows the cultivation of crops such as tomatoes and cucumbers, as well as many tropical trees.

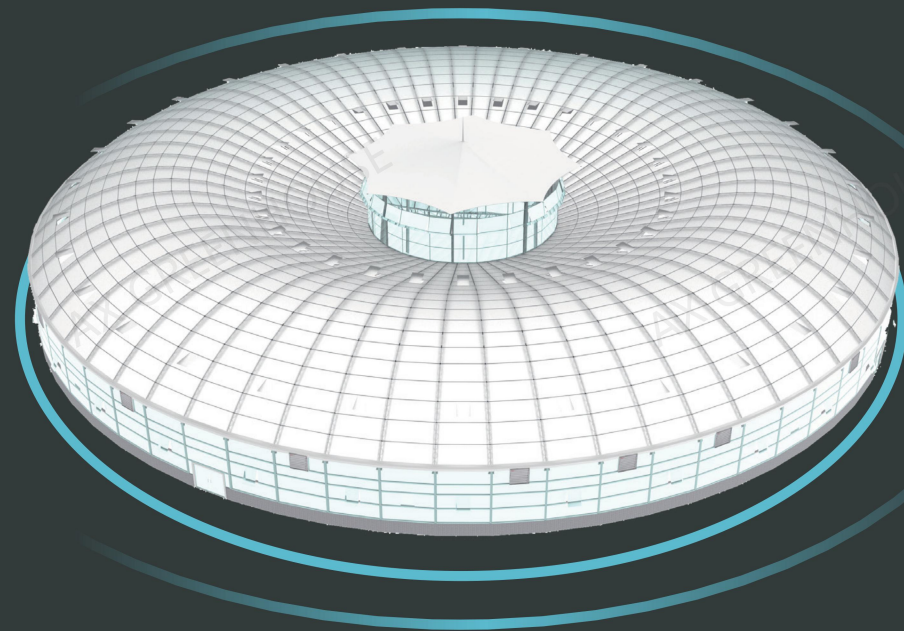


Customized Greenhouse

全定制温室

灵活支持大型结构和特殊设计

Flexible support for large structures and special designs



全定制温室是以现代温室为载体，集观光游览、技术展示、科普教育于一体的高科技农业主题公园。我们不仅提供观光温室的常规生产，还可以负责内部的规划、设计和建造。

Customized greenhouse is a modern greenhouse as a carrier, set sightseeing, technology display and science education in one of the high-tech agriculture theme park. We not only provide routine production of sightseeing greenhouses, but also responsible for internal planning, design and construction.

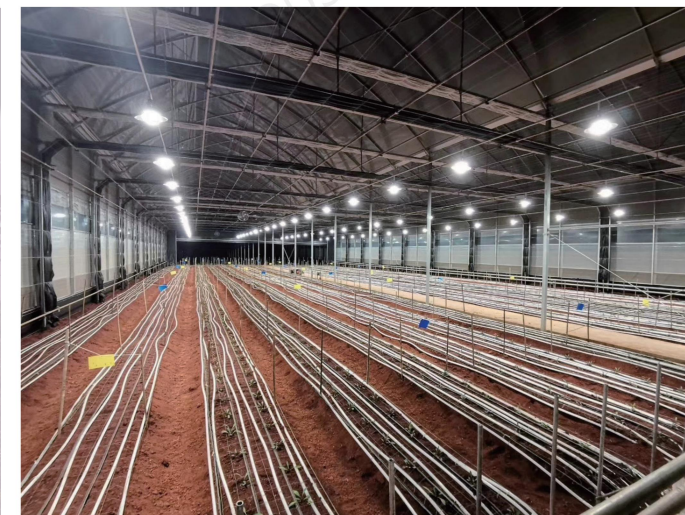


Blackout Greenhouse

遮光温室是自动化温室专门为植物与像医用大麻的特殊照明需求。随着配套设施，种植者可以完全控制影响植物生长的因素。通过改变光，温度和湿度，温室可以缩短植物的生长周期，最大限度地提高其收益率，遮光温室大棚专为植物与像医用大麻的特殊照明需求。通过重整温室的内部骨架结构,其中多跨度的遮光温室是适合于在较大的站点大规模种植。由于大型内部区域的，在多跨度遮光温室所用的通风和制冷系统也不同。

Light Deprevation Greenhouse 遮光温室

Blackout greenhouses are automated greenhouses specially designed for plants and special lighting needs like medical marijuana. With supporting facilities, growers can fully control the factors that affect the growth of plants. By changing the light, temperature and humidity, the greenhouse can shorten the growth cycle of plants to the maximum. To maximize its profitability, shading greenhouses are designed for special lighting needs of plants and medical marijuana. By reorganizing the internal skeleton structure of the greenhouse, the multi-span shading greenhouse is suitable for large-scale cultivation on larger sites. For large internal areas, the ventilation and cooling systems used in multi-span shaded greenhouses are also different.





Arch Greenhouse Design 圆拱温室

连栋圆拱形温室抗风载、抗雪载能力较强，内部可再添置一层圆拱内保温，夏季使用时则采用风机水帘强制通风降温设备、四周及顶部卷膜通风、外遮阳来协同达到降温的效果。经济适用使用范围广。一般可做6米、7米、8米、9.6米的跨度，顶部覆盖材料一般采用塑料薄膜，四周则不限于膜，也可采用PC板或者玻璃等覆盖材料。



Arch Greenhouse



空间利用率高



投入成本较低

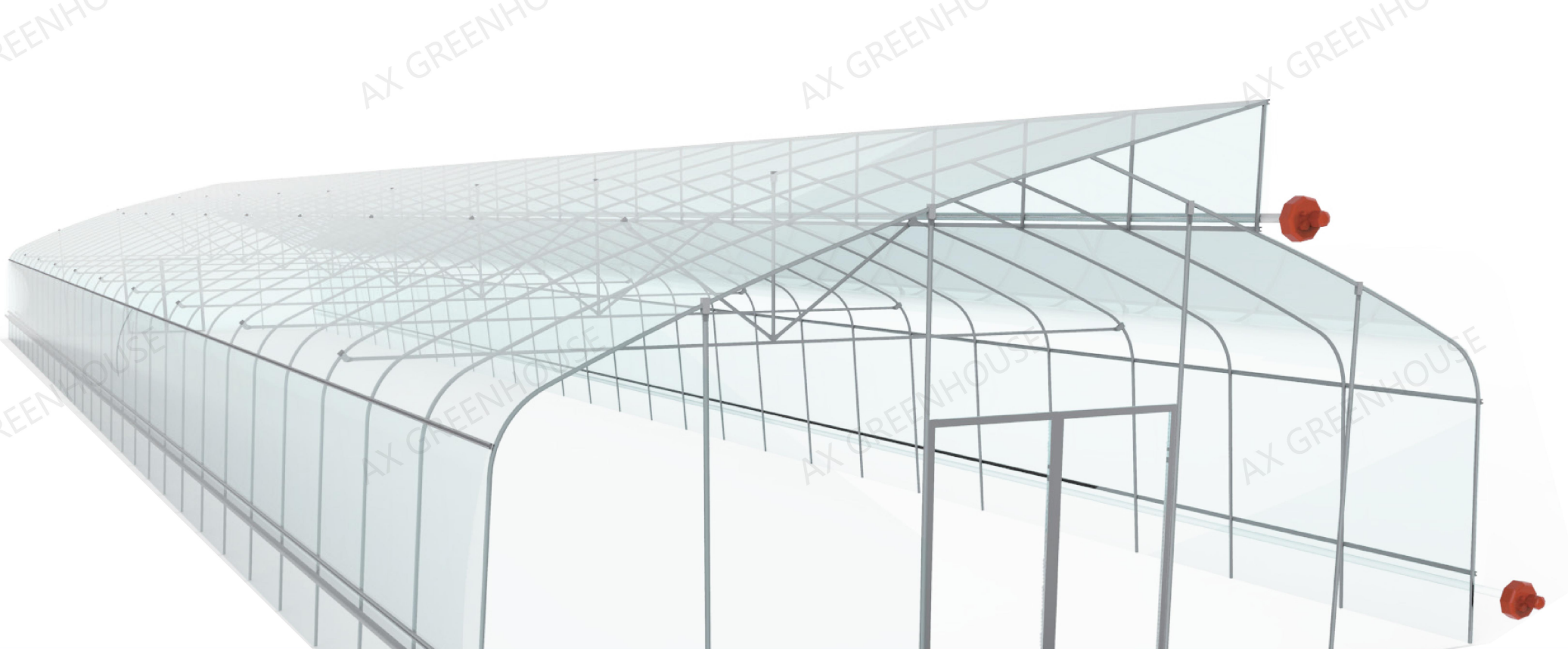


可加内排水



保温效果优良

Multi-span arched greenhouse have strong anti-wind load and anti-snow load capacity, the internal can be added to a layer of arch insulation. In summer, using of cooling pad and fan of cooling system, roll up motor side or top ventilation and external shading to collaborate to achieve the effect of cooling. Affordable use of a wide range generally do 6 meters, 7 meters, 8 meters, 9.6 meters span, the top covering materials generally use plastic film, surrounded by the membrane is not limited to film, can also be used PC panel or glass and other covering materials.



Sawtooth Greenhouse

锯齿温室

锯齿形温室大棚顾名思义就是其顶部的结构样式排列起来像锯齿状的大棚。锯齿状的温室大棚常见于南方地区，锯齿形骨架结构由立柱、横梁、锯齿立柱、锯齿半弧、锯齿撑杆组成。锯齿温室的锯齿高度根据其单个锯齿的跨度来定，高度至少在1.5米以上。

Zigzag greenhouses are, as the name implies, arranged in a structural pattern at the top like zigzag greenhouses. Serrated greenhouses are commonly seen in the south. The serrated skeleton structure is composed of column, beam, serrated column, serrated half arc and serrated brace. The sawtooth height of the greenhouse is determined according to the span of its single sawtooth, the height is at least 1.5 meters above.

锯齿形连栋温室多采用四周和顶部自然对流通风，室内湿热空气会迅速排出室外，降低室内的温度湿度。其自然通风效果，要远远优于连栋圆拱温室，所以对于周年室外温度比较高的地区，尤其是温室设计又不配套机械强制通风系统时，锯齿屋面温室是比较理想的温室结构选型。一般可做6米、7米、8米、9.6米的跨度。覆盖材料一般都是塑料薄膜。

Serrated multi-span greenhouse mainly used natural ventilation on side or top, indoor hot and humid air will be quickly discharged outdoors, reducing the indoor temperature and humidity. Its natural ventilation effect, far better than the multi-span arched greenhouses, so the annual outdoor temperature is relatively high areas, especially the greenhouse design is not supporting the mechanical forced ventilation system, the serrated roof greenhouse is the ideal greenhouse structure selection. The Generally do 6 meters, 7 meters, 8 meters, 9.6 meters span. Covering materials are generally plastic film.



ADVANTAGES



Photovoltaic Solar Greenhouse

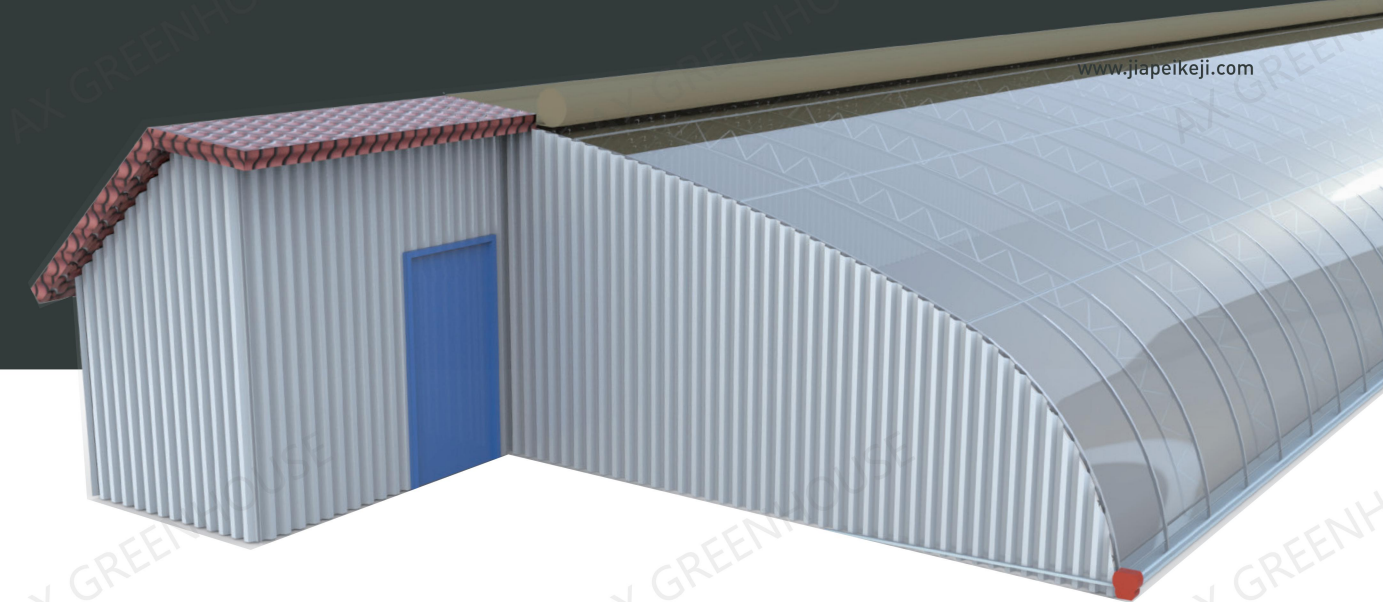
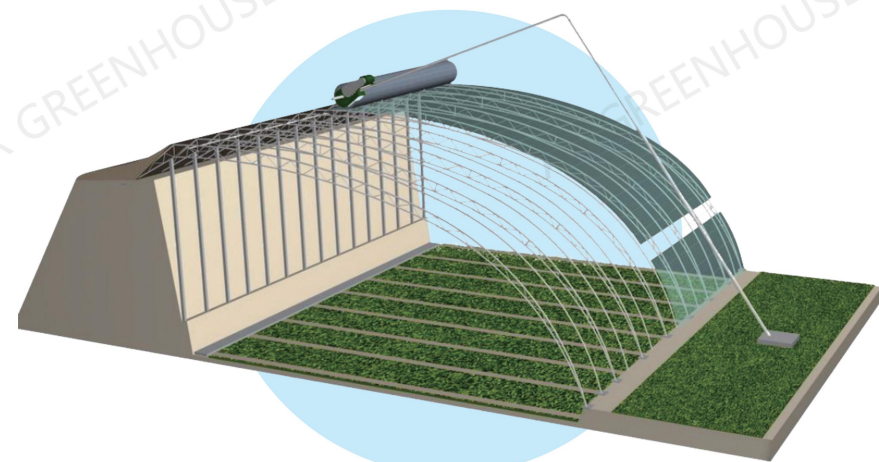
光伏日光温室

光伏温室

PV(Solar) greenhouse

光伏温室是将建设集太阳能光伏发电、智能温控、现代高科技种植为一体的温室大棚。充分利用太阳能并与温室技术相结合以达到节能环保资源高效利用的效果。

PV(Solar) greenhouse is the construction of solar photovoltaic power generation, intelligent temperature control, modern high-tech cultivation as together of the greenhouse . Make full use of solar energy and combined with greenhouse technology to achieve the efficient use of energy saving and environmental protection.

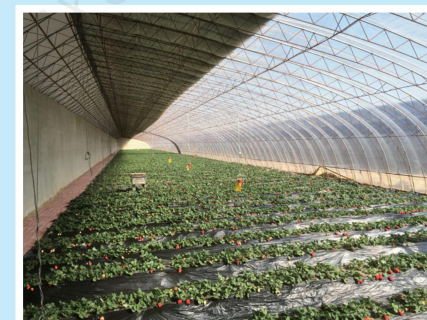


日光温室

Sunlight Greenhouse

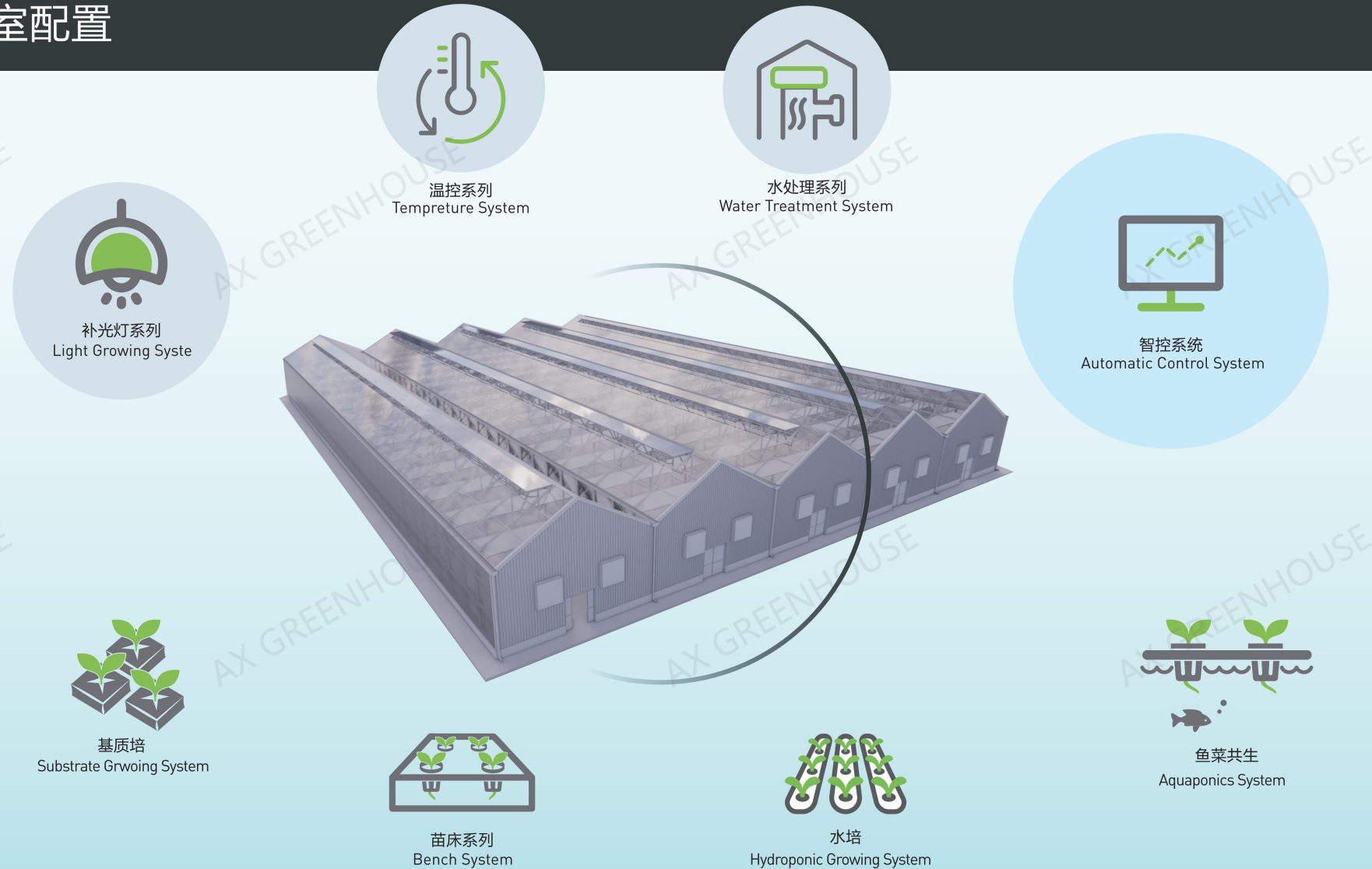
日光温室是三面为围护墙体的单坡面塑料温室，是我国北方地区独有的一种温室类型，是在室内不加热的情况下，通过后墙体对太阳能吸收实现蓄放热，维持室内一定的温度水平，以满足蔬菜作物生长的需要的温室结构，其保温效果好、投资低、节约能源，非常适合我国经济欠发达农村使用。

Sunlight greenhouse is a three-sided wall and one side plastic film greenhouse, is a unique type of greenhouse in northern China. It is achieve heat storage by the wall after the absorption of solar energy and not heated in the indoor to maintain Indoor temperature level to meet the needs of the growth of vegetable crops in the greenhouse structure, It has the advantage of good insulation effect, low investment, energy conservation, so it is very suitable for China's underdeveloped rural area.



Complementary Systems

温室配置



Substrate Growing System

基质培

蔬菜基质栽培技术以其省工省力、省水省肥、优质高效、环保少污染以及避免连作障碍等优点正逐渐被广大菜农所认可。

针对基质栽培设施一次性投入过大、营养液管理较为繁琐、病害发生难以控制这一现状，我们本着“就简、节能、高效、生态”的原则，对基质栽培进行多年改良和试验示范推广，探索出一条广大菜农能够采纳且易于推广应用的“五改”简易有机生态型基质栽培新技术。

Vegetable substrate cultivation technology is gradually recognized by vegetable farmers for its advantages of saving labor, water and fertilizer, high quality and high efficiency, environmental protection and less pollution and avoiding continuous cropping obstacles.

For excessive substrate cultivation facilities to invest, nutrient management is relatively complicated, difficult to control the plant disease occurs, the status quo, we in line with "Jane, energy saving, high efficiency, the ecological" principle, the improvement of substrate cultivation for many years and experiment and demonstration promotion, explore a large vegetable farmers to adopt simple and easy popularization and application of "five changes" new technology of organic ecological culture.



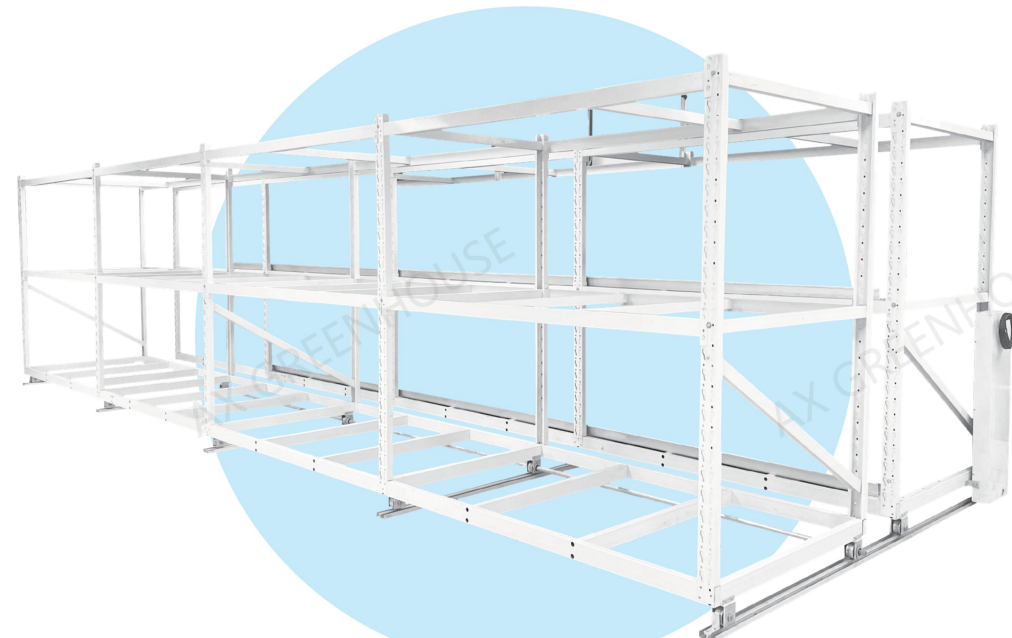
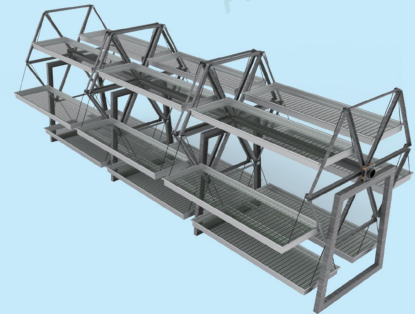


Hydroponic Growing System

水培



Bench System 苗床系列



水培是一种新型的植物无土栽培方式，又名营养液培，其核心是将植物的根系直接浸润于营养液中，这种营养液能替代土壤，向植物提供水分、养分、氧气等生长因子，使植物能够正常生长。



Hydroponics is a new type of soilless cultivation of plants, also known as nutrient liquid culture. Its core is to directly infiltrate the root of the plant in the nutrient solution. This nutrient solution can replace the soil and provide water, nutrients, oxygen, etc. to the plant. Growth factors enable plants to grow normally.

Aquaponics System

鱼菜共生



鱼菜共生是一种新型的复合耕作体系，它把水产养殖与水产栽培这两种原本完全不同的农耕技术，通过巧妙的生态设计，达到科学的协同共生，从而实现养鱼不换水而无水质忧患，种菜不施肥而正常成长的生态共生效应。

Aquaponics System is a new type of compound farming system. It combines aquaculture and hydroponic cultivation, which are two completely different farming technologies, through clever ecological design to achieve scientific collaborative symbiosis. Therefore, the ecological symbiosis effect of growing fish without changing water without worrying about water quality and growing vegetables without fertilization can be realized.

Light Growing System

补光灯系列



温室补光灯，也叫植物补光灯，是依照植物生长的自然规律，根据植物利用太阳光进行光合作用的原理，使用灯光代替太阳光来提供给温室植物生长发育所需光源的一种灯具。

光照与作物的生长有密切的关系。最大限度的捕捉光能，充分发挥植物光合作用的潜力，将直接关系到农业生产的效益。近年来由于市场需求的推动，普遍采用温室大棚生产反季节花卉、瓜果、蔬菜等，由于冬春两季日照时间短，作物生长缓慢，产量低，因此急需进行补光。

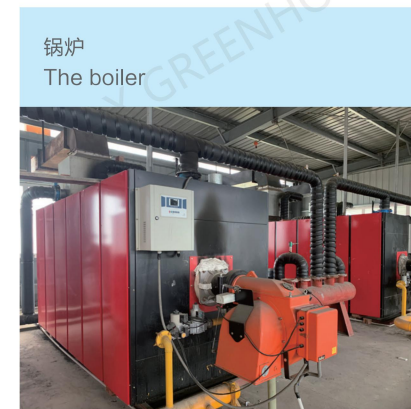
Light Growing System is a lamp that uses light instead of sunlight to provide the light source needed for greenhouse plant growth and development according to the natural law of plant growth and the principle of plants using sunlight for photosynthesis.

Light is closely related to the growth of crops. Maximizing the capture of light energy and giving full play to the potential of plant photosynthesis will directly affect the benefits of agricultural production. In recent years, driven by market demand, greenhouses have generally been used to produce off-season flowers, fruits and vegetables. In the winter and spring, the sunshine time is short, the crops grow slowly, and the yield is low, so it is practical to supplement the light.

Temperature Control System

温控系列

温室智能控制系统是现代化农业发展的一种需求，是在物联网应用逐渐广泛的情况下提出来的，该系统实现对温室灌溉设备的监视、控制、环境数据的不间断采集、整理、统计、制图。



Greenhouse intelligent control system is a demand of modern agricultural development, which is put forward under the condition that the Internet of things is gradually widely used. The system realizes the monitoring, control of greenhouse irrigation equipment, continuous collection, sorting, statistics and mapping of environmental data.



Water Treatment System

水处理系列

良好 | 高效 | 便捷



反渗透水处理 (RO System)



过滤配套系统 (Filter System)



水罐配套系统 (Water Tank System)



消毒机 (Disinfectant)



水肥一体灌溉系统
Water fertilizer integrated irrigation system

Automatic Control System

智控系统

精确 | 可靠 | 广泛

The intelligent control system is an automatic control technology which can drive the intelligent machine to realize the control target autonomously without the intervention of people. For many complex systems, it is difficult to establish an effective mathematical model and use the conventional control theory to carry out quantitative calculation and analysis.



智能控制系统就是在无人干预的情况下能自主地驱动智能机器实现控制目标的自动控制技术。对许多复杂的系统，难以建立有效的数学模型和用常规的控制理论去进行定量计算和分析，而必须采用定量方法与定性方法相结合的控制方式。

为作物保证精确的营养供给

